

## Product View

EN

### Main unit

1. Handle
2. Control buttons:
  1. Power button
  2. Mode switching button
  3. Self-cleaning button
  4. Fixed spray button
3. Display screen
4. Main body
5. Clean water tank
6. Floor brush head
7. Roller brush
8. Handheld vacuum cleaner
9. Dust cup
10. Dirty water tank
11. Roller brush side cover
12. Handheld vacuum cleaner release button
13. Mode switching button (Handheld vacuum cleaner)
14. Power button (Handheld vacuum cleaner)
15. Mode/Battery level indicator
16. Power cord
17. Charging base

Fig.A-1

### Display screen

1. Dirt concentration indicator  
Color changes with the dirt concentration  
· Red: high  
· Orange: medium  
· Green: low
2. Smart mode
3. Sterilization mode
4. Suction mode
5. Self-cleaning mode
6. Battery percent
7. Insufficient water in the clean water tank
8. Blocked tube
9. Roller brush is stuck
10. Dirty water tank is full

Fig.A-2

Note: The illustrations in this manual are for reference only. Please refer to the actual product.

04

## Assembly

EN

### Installing the handle

1. Handle installation: Insert the handle vertically into the main body until you hear a click. Ensure the handle is firmly fixed.
2. Handle removal: Remove the handheld vacuum cleaner and use a suitable tool to insert into the handle release hole while holding the handle and pulling up.

Fig.B-1

#### Note:

If the appliance does not operate normally after handle installation, please check whether the handle is installed in place.

### Installing the dust cup assembly and the handheld vacuum cleaner

1. Align the raised locating buckle on the filter assembly with the groove on the dust cup. Make sure the filter assembly is in place.
2. Align the locating buckle of the dust cup assembly with the slot in the handheld vacuum cleaner and push the dust cup assembly. When you hear a "click" sound, it means the installation is successful.
3. Install the handheld vacuum cleaner into the main body until you hear a click.

Fig.B-2

## Charging

Fully charge the appliance before first use.  
Place the charging base against a wall and connect the power supply. When the number reaches 100 on the display screen, the battery is fully charged.

Fig.C

#### Note:

The self-cleaning mode can be enabled only when the battery level is more than or equal to 20%.

05

## Operation

EN

### Adding the clean water

1. Press and hold the clean water tank release button to remove the clean water tank.
2. Open the clean water tank cap, fill it with clean water and then close it tightly.
3. Re-install the clean water tank until you hear a click.

Fig.D-1

### Starting cleaning

1. Power button
2. Mode switching button

Press the power button briefly to start cleaning. Press the button again to stop cleaning. Press the mode switching button to switch between the smart mode, suction mode and sterilization mode.

Tap the fixed spray button to clean stubborn stains.

#### Note:

· If the appliance is turned off while lying down, please stand the appliance upright to prevent the internal sewage from leaking out.

· To get a better cleaning performance, it is recommended to wait for the appliance to dampen the roller brush before cleaning the floor after turning on the appliance.

Fig.D-2

### Self-cleaning

1. Place the appliance back to the charging base, and press the self-cleaning button briefly to start the self-cleaning.
2. Press the self-cleaning button briefly to pause/restart the self-cleaning.
3. Empty the dirty water tank while self-cleaning is completed.

Fig.D-3

- a. Mode/Battery level indicator  
· Steady on white: standard mode  
· Steady on bright white: strong mode  
· Flash red: malfunction/low battery

Fig.D-5

06

## Operation

EN

### Drying the brush

- The appliance starts drying mode automatically after self-cleaning is completed.
- Press and hold the power button for 2 seconds to start the quick drying mode. Press the button again to pause/restart the quick drying mode.
- Press and hold the power button or the self-cleaning button to exit the drying mode.

Fig.D-3

### Emptying the dirty water tank

1. Press the dirty water tank release button to remove the tank as shown.
2. Remove the dirty water tank lid and dump the trash.
3. Install the dirty water tank lid, and dirty water tank back into the appliance in turn, and hear the clicking sound that the installation is successful.

Fig.D-4

### Turning on/off the voice prompt

In power on, press and hold the mode switching button for 2 seconds to turn off the voice prompt, and then press and hold the button again for 2 seconds to turn on the voice prompt.

### Using the handheld vacuum cleaner

1. Press the handheld vacuum cleaner release button and take out the handheld vacuum cleaner.
2. Remove the connector and then install accessories according to cleaning requirements.
3. Press the power button briefly to start cleaning. Press the mode switching button briefly to switch mode.

- a. Mode/Battery level indicator  
· Steady on white: standard mode  
· Steady on bright white: strong mode  
· Flash red: malfunction/low battery

Fig.D-5

07

## Operation

EN

### Accessory storage

Insert the accessory storage holder into the charging base storage slot and place accessories on the accessory storage holder.

Fig.D-6

## Care and Maintenance

WARNING: Before cleaning and maintaining the appliance, it should be turned off and the power plug should be unplugged.

### Cleaning the dirty water tank and the filter assembly

Rinse the dirty water tank, dirty water tank lid and the filter sponge with clean water. The provided cleaning brush can be used to clean the inner wall of the tank.

Fig.E-1

### Cleaning the floor brush head

1. Press the floor brush head cover release button to remove the floor brush head cover and take out the roller brush.
2. Rinse the suction inlet with water and wipe it with a dry cloth.
3. Clean out any hair and debris tangled on the roller brush. Rinse the roller brush with clean water.

Fig.E-2

### Cleaning the dust cup and filter

1. Press the dust cup release button to remove the dust cup. Remove the cyclone separator and dump the trash.
2. Remove the filter and filter sponge, tap the filter gently or use the cleaning brush to remove surface dust.
3. Rinse the dust cup, filter, and filter sponge with water until clean and air dry completely before reuse.

Fig.E-3

08

## Care and Maintenance

EN

### Cleaning the soft roller brush head

1. Press the roller brush release button and remove the roller brush.
2. Clean out any hair and debris tangled on the roller brush with a suitable tool.
3. After cleaning, reinstall the roller brush until you hear a click.

Fig.E-4

### Cleaning the electric mite removal brush

1. Insert your thumb into the release hole in the top cover of the brush and rotate it counterclockwise to remove the top cover.
2. Remove the roller brush and clean out any hair and debris tangled on the roller brush with a suitable tool.
3. Reinstall the roller brush and the top cover in turn and turn the top cover clockwise until you hear a click.

Tip: It is not recommended to wash the mite removal brush with water.

Fig.E-5

09

## Troubleshooting

EN

If an error occurs, the appliance will stop working. Please refer to the following table for troubleshooting. If the problem persists, please contact the customer service.

Fault	Cause	Solution
The appliance does not work.	Battery exhausted.	Fully charged for use.
	Battery overheat protection.	Wait until the battery's temperature returns normal.
	Dirty water tank is full.	Empty the dirty water tank.
	Brush head or dirty water tank pipe is blocked.	Clean the brush head and pipe.
No water is coming out of the appliance.	Roller brush is entangled.	Clean the roller brush
	Handle is not installed in place.	Re-install the handle.
The bottom of brush head leaks water.	Clean water tank is short of water.	Fill the clean water tank with clean water.
	Clean water tank is not installed in place.	Re-install the clean water tank.
Abnormal charging.	The filter sponge is not installed.	Install the filter sponge.
	The filter sponge is not completely dry after being cleaned.	Dry the filter sponge completely before use.
No voice prompt.	Too many water stains are on the floor.	It is recommended to switch to the suction mode.
	The charging base plug is not inserted into the electrical outlet properly.	Make sure the charging base plug is inserted in place.
Self-cleaning does not work.	The appliance is not placed onto the charging base properly.	Make sure the appliance is placed onto the charging base properly.
	Voice prompt is off.	Press and hold the mode switching button for 2 seconds to turn on the voice prompt.
Self-cleaning does not work.	Dirty water tank is full.	Empty the dirty water tank.
	Clean water tank is not installed.	Re-install the clean water tank.
	Low or depleted battery.	Ensure the power is sufficient to use the self-cleaning function.

10

## Specification

EN

### Main unit

Product name: Water-absorbing vacuum cleaner (Cordless Wet&Dry Vacuum)  
Product model: VXAMI41  
Rated power: 300 W  
Rated voltage: 21.6 V  
Clean water tank capacity: 600 mL  
Dirty water tank capacity: 500 mL  
Battery capacity: 4000 mAh  
Dust cup capacity: 150 mL

### Motorized cleaning head

Model: VXAMI42  
Rated voltage: 21.6 V  
Rated power: 50 W

### Charging base

Model: VXCBIF  
Rated input: 220-240 V-50-60 Hz  
Rated output: 26 V  
Rated power: 380 W

### Soft roller brush head

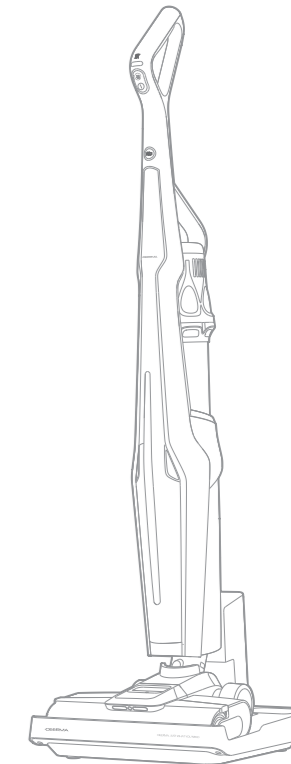
Model: VCFBIB  
Rated voltage: 12 V  
Rated power: 15 W

### Electric mite removal brush

Model: VCMSIA  
Rated voltage: 12 V  
Rated power: 15 W

11

DEERMA  
DEERMA, JUST WHAT YOU NEED

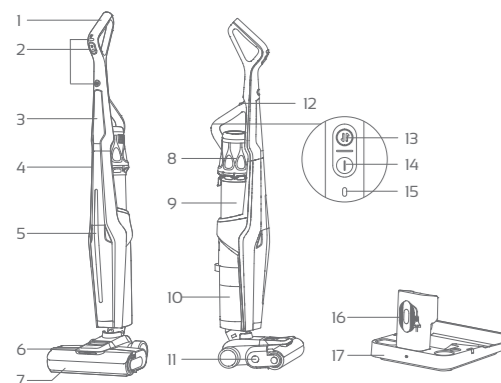


# VX300 Mix

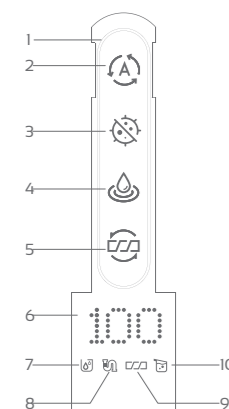
Deerma  
Cordless Wet&Dry Vacuum

## User Manual

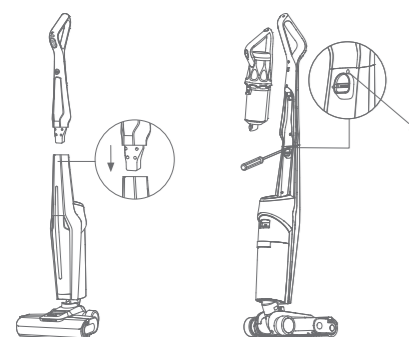
### A-1



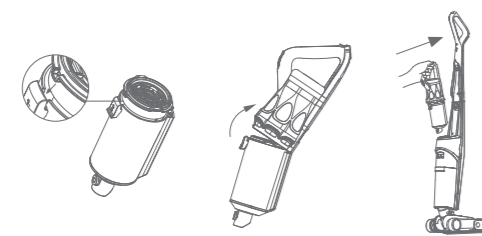
### A-2



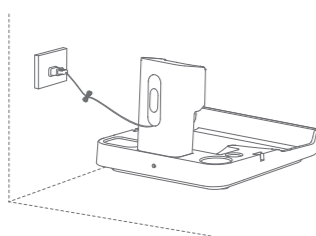
### B-1



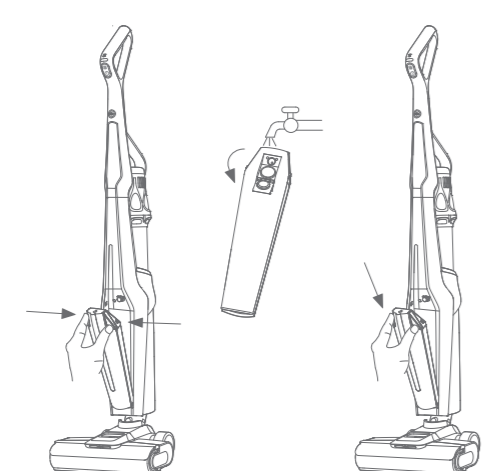
### B-2



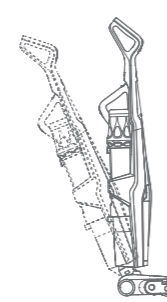
### C



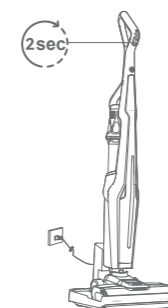
### D-1



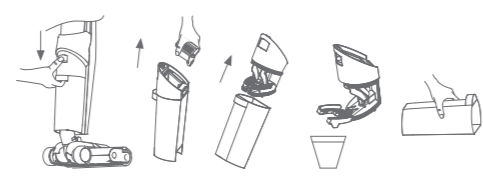
### D-2



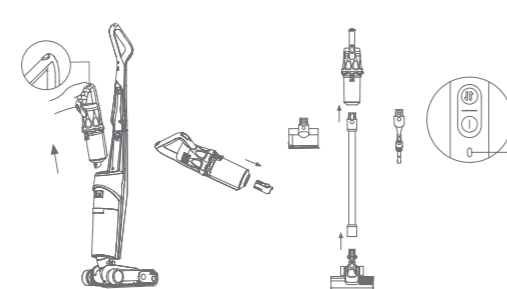
### D-3



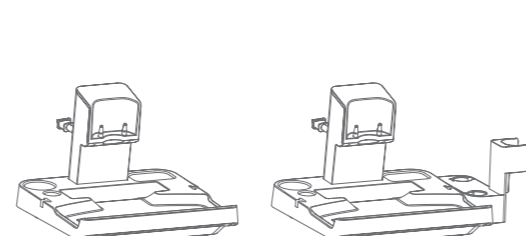
### D-4



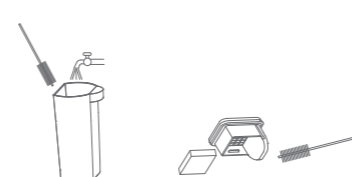
### D-5



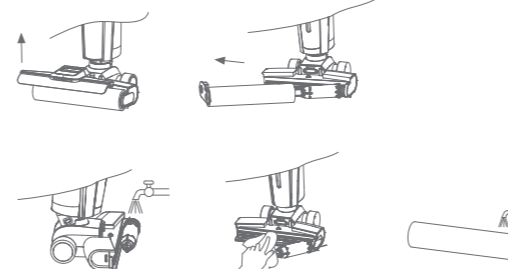
### D-6



### E-1



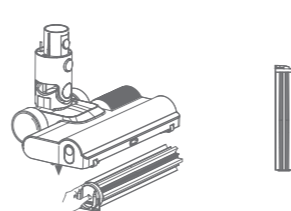
### E-2



### E-3



### E-4



### E-5



### • Safety Information

EN

This appliance is intended for household use only. Please read this user manual carefully before using the appliance and keep it properly.

- This appliance is not intended for use by persons (including children) with reduced physical, sensory or mental capabilities, or lack of experience and knowledge, unless they have been given supervision or instruction concerning use of the appliance by a person responsible for their safety.

- Children should be supervised to ensure that they do not play with the appliance.

- This appliance can be used by children aged from 8 years and above and persons with reduced physical, sensory or mental capabilities or lack of experience and knowledge if they have been given supervision or instruction concerning use of the appliance in a safe way and understand the hazards involved. Children shall not play with the appliance. Cleaning and user maintenance shall not be made by children without supervision.

- Do not use outdoors, on non-floor surfaces, or in commercial or industrial environments.

- Do not use to pick up high-temperature substances (e.g., unextinguished cigarette butts, matches, hot ashes, etc.), ultra-fine particulates (e.g., lime, cement, wood chips, gypsum powder, ashes, charcoal powder, etc.), dangerous items (e.g., solvents, detergents, etc.), corrosive chemicals, foamy liquids, and other substances with uncertain physical properties.

- Do not use to pick up flammable and explosive liquids such as gasoline, and it is prohibited to pick up toxic solutions, such as ammonia bleach, ammonia water, or sewer cleaners.

- Do not use to pick up sharp substances, such as glass fragments, toys, pins, paper clips, stones, gypsum, or large pieces of paper. These substances may cause blockages or damage the appliance.

- Do not use to pick up stains with strong grease, stickiness or dyeing properties such as shoe polish, paint, or pigments.

- Do not charge or store the product near heat sources or in damp areas (e.g., radiators, kitchen, or bathroom).

- Do not add disinfectants, essential oils, vinegar, perfumes, etc. to the water tank, as they may damage the appliance.

- Do not place any small objects at the air outlet or block the air outlet. Promptly remove all small objects that may hinder the smooth airflow of the air outlet to prevent the product from overheating.

- Do not immerse the appliance in liquids or expose it to direct sunlight.

### • Safety Information

EN

- Use extra caution when cleaning on stairs.
- Do not lift, carry, tilt, or lay the appliance flat while it is in operation to prevent the liquid from flowing back into the motor.

- Do not wet the appliance, as this may cause a short circuit, leading to fire or electric shock.

- This appliance contains batteries that are only replaceable by skilled persons.

- Do not use any third-party batteries.

- **WARNING:** For the purposes of recharging the battery, only use the detachable supply unit provided with this appliance.

- Please charge according to the rated voltage specified on the charging base.

- Do not touch the plug or any live parts of the appliance with wet hands to prevent the risk of electric shock.

- It will be dangerous if the product is used on the power cord.

- Unplug the appliance before cleaning or performing maintenance.

- If the supply cord is damaged, it must be replaced by its service agent or similarly qualified persons in order to avoid a hazard.

- In the event of a malfunction, such as overheating, abnormal noise, unusual odor, or weak suction, it is recommended to contact the official after-sales service. Do not disassemble, repair or modify the appliance or charging base without authorization.

- Do not disassemble or reassemble any parts other than the detachable components specified in this user manual, otherwise, it may result in danger.

- Use only as described in this user manual. Any losses caused by improper use shall be borne by the user.

### • Battery Removal and Disposal

EN

The chemical substances contained in the lithium-ion battery built into this appliance may cause pollution to the environment. Before discarding it, please have it removed by professional personnel and hand it over to certified battery recycling institutions for centralized disposal.


- Before discarding the appliance, the battery must be removed from the appliance;
- When removing the battery, the appliance must be powered off;
- The battery should be disposed of safely.

1. Use a suitable screwdriver to remove the two screws on the rear cover plate of the handheld vacuum cleaner, pry open and then take off the rear cover plate.

2. Remove the four screws of the parts between the handheld vacuum cleaner and the dust cup, and take out the internal components.

3. Remove the three screws that fix the battery assembly, disconnect the internal terminal connecting wires, and take out the battery pack assembly.

4. Remove the two screws on top of the PCB board. Pull out the nickel piece connecting the main body and the PCB board (avoid touching the positive and negative terminals to prevent a short circuit). Finally, remove the bracket and separate the battery cells for disposal.\*

 All products bearing this symbol are waste electrical and electronic equipment (WEEE as in directive 2012/19/EU) which should not be mixed with unsorted household waste. Instead, you should protect human health and the environment by handing over your waste equipment to a designated collection point for the recycling of waste electrical and electronic equipment, appointed by the government or local authorities. Correct disposal and recycling will help prevent potential negative consequences to the environment and human health. Please contact the installer or local authorities for more information about the location as well as terms and conditions of such collection points.

For detailed e-manual, please go to <http://www.deerma.com>

Read instruction manual carefully before use.

Guangdong Deerma Health Technology Co., Ltd.

Add: No. 9 Chuangsheng Road, Xincun Village, Beijiao Town, Shunde District, Foshan City, Guangdong Province, China

Made in China