

• Assembly

EN

Installing the main unit and accessories

Fig.C-1

Installing the storage holder

1. Tear off the positioning sticker and stick it to the pre-installed position on the wall. Ensure the bottom of the sticker is parallel to the floor and 98-100 cm away from the floor.

2. According to the holes on the sticker, use a power tool with a 6 mm drill bit to drill holes and punch in the wall plugs.

3. Align the holes of the storage holder with the wall plug and drive two screws to fix the storage holder on the wall.

Note:

- The storage holder should be secured near an electrical outlet so that the power adapter can be connected for charging.
- The appliance can be stored against the wall, ensuring that the floor brush head fits horizontally on the floor.

Fig.C-2

• Operation

Charging

Insert the power adapter end into the charging port first, then insert the plug into an electrical outlet. Make sure the power adapter is connected to the outlet in place.

Note:

- It is recommended to fully charge the appliance before using it for the first time.
- The appliance will not operate while charging.
- When the screen becomes yellow, it means the battery level is $\leq 10\%$.
- The battery temperature may rise due to continuous use of strong mode. In such cases, charging time could be extended. It is recommended to turn off the appliance to cool down for 1 hour before charging.

Fig.D-1

• Operation

EN

Starting cleaning

1. Press the power button to start cleaning, and press again to stop cleaning.

2. Press the mode switching button to switch between eco mode, standard mode and strong mode.

3. Press and hold the mode switching button for 5 seconds to switch to turbo mode (only use the mode when the power is higher than 20%).

Note:

The 2-in-1 crevice nozzle is suitable for cleaning dust from doors, windows, staircase corners, wall corners, sofa crevices and other small crevices, as well as cleaning dust from mattresses, sofa chairs, wall cabinets, and all kinds of work surfaces.

a. This line indicates the effective capacity of the dust cup: 0.4 L/The MAX capacity of the dust cup is: 0.56 L

Fig.D-2

Using the water tank

1. Dampen the mop pad and wring out excess water, then attach it securely to the bottom of the water tank.

2. Open the water tank plug, add an appropriate amount of clean water, then close the plug.

3. Attach the brush head to the water tank until you hear a click.

4. Switch the water volume control switch to "ON" to start mopping.

Fig.D-3

• Care and Maintenance

EN

WARNING: Before cleaning and maintaining the appliance, turn off the appliance and be sure to disconnect the power adapter.
Note: The appliance cannot be immersed in water for cleaning.

Emptying the dust cup

Method 1

1. Push the dust cup bottom cover release trigger and the dust cup bottom cover automatically pops open to dump the trash inside the dust cup.

2. After cleaning, close the dust cup bottom cover in the direction of the arrow.

Fig.E-1

Method 2

1. Press and hold the dust cup release button to remove the dust cup assembly at an upward angle.

2. Press the dust cup bottom cover button to open the dust cup bottom cover and dump the trash inside the dust cup. After cleaning, close the dust cup bottom cover in the direction of the arrow.

Note:

- Clean the dust cup regularly to avoid the accumulation of too much dust blocking the air ducts, resulting in reduced suction power.
- It is recommended to disassemble the dust cup above the trash to avoid dust falling on the floor.
- It is recommended to replace the filter every 2 to 3 months. The period of replacement can be shortened according to the actual use.

Fig.E-2

Cleaning the dust cup and filter assembly

- a. Filter
- b. Filter sponge
- c. Cyclone separator

1. After removing the dust cup, separate the cyclone separator from the dust cup. Remove the filter and filter sponge from the cyclone separator in turn, following the directions shown in the illustration.

2. Remove dust from the surface of the dust cup, cyclone separator, filter sponge and filter. Rinse them with water until clean and air dry completely before reuse.

• Care and Maintenance

EN

3. After drying, install them in order to ensure they are all in place.
Note:

- It is recommended to tap the filter to clean the dust after each vacuuming.
- According to the actual use, it is recommended to clean the filter once after every vacuuming for one month.
- When the suction power is weakened, please clean the dust cup in time to avoid affecting the vacuuming effect.

Fig.E-3-Fig.E-5

Cleaning the soft roller brush head assembly

a. Brush side cover release button

1. Press the brush side cover release button, squeeze the side cover and remove the roller brush.

Fig.E-6

2. Clean out any hair and debris tangled on the roller brush with a suitable tool. After cleaning, reinstall the roller brush until you hear a click.

Note: After completing the floor cleaning with the water tank, any dirt on the brush head cover should be removed by wiping with a damp cloth or wet paper towel. Do not directly rinse with water.

Fig.E-6

Cleaning the electric mite removal brush

1. Insert your thumb into the release hole in the top cover of the brush and rotate it counterclockwise to remove the top cover.

2. Remove the roller brush and clean out any hair and debris tangled on the roller brush with a suitable tool.

3. Reinstall the roller brush and the top cover in turn and turn the top cover clockwise until you hear a click.

Fig.E-7-Fig.E-8

Cleaning the 2-in-1 crevice nozzle

Remove the 2-in-1 crevice nozzle from the main body, wipe it with a damp cloth and dry it completely.

Note: Do not use gasoline, alcohol, solvents, or other alternative substances as they may damage the surface.

• Care and Maintenance

EN

Cleaning the water tank assembly

1. Empty the water tank by opening the water tank plug.

2. Remove the mop pad from the tank, rinse and dry it before reuse.

Note:

- After mopping, remove the mop pad and clean it to avoid blocking the water outlet with dirty water.
- A worn or damaged mop pad that no longer sticks to the water tank should be replaced to ensure optimal cleaning performance.
- When the appliance is charging or not in use, remove the water tank and drain any remaining water to prevent mildew or lingering odor.

Fig.E-9

• Battery Removal and Disposal

This appliance contains a rechargeable lithium battery pack. The chemical substances within it can cause environmental pollution. Please remove the battery pack before the product is scrapped and hand it over to a professional battery recycling institution for centralized disposal.

- Before discarding the appliance, the battery must be removed from the appliance.
- When removing the battery, the appliance must be powered off.
- The battery should be disposed of safely.

Note:

Please power off the appliance and drain the battery as much as possible before removing the battery.

Please hand over the removed battery to a professional battery recycling institution for disposal.

Do not expose the battery to high - temperature environments, as it may cause an explosion.

If the battery leaks and you accidentally come into contact with the leaked liquid, immediately rinse the affected area with plenty of clean water and seek medical attention right away.

1. Remove the two screws connecting the bottom cover to the body with a suitable screwdriver and remove the bottom cover.

2. Remove the screws connecting the electrostatic head bracket to the main body. Use a suitable tool to hold the electrostatic head so that the electrostatic head and the electrostatic head bracket can be pushed out of the body.

3. Remove the screw plug and remove the two screws connecting the housing assembly to the body assembly. Push the housing assembly back to separate the housing assembly from the body assembly.

• Battery Removal and Disposal

EN

4. Unplug the two sets of connectors connecting the housing assembly to the body assembly, and pry open the housing back cover and the six-piece housing front cover decorative cover.

5. Remove the nine screws connecting the air inlet grid to the housing and the inner cover of the housing, and remove the air inlet grid.

6. Remove the three connecting wires between the battery pack and the brushless motor, and remove the brushless motor.

7. Remove the four screws connecting the inner cover of the machine to the casing, and take out the inner cover of the machine and the battery pack assembly. Remove the three screws connecting the inner cover of the machine to the battery pack, and directly take out the battery pack.

8. Tear off the sealing sheet on one side of the battery pack, remove the screws on the PCB board, and cut off the nickel sheet connecting the battery cell to the PCB board (be careful not to touch the positive and negative to cause a short circuit). Remove the two screws above and below the bracket, separate the bracket and the battery cell for scrapping.

• Environment Protection



All products bearing this symbol are waste electrical and electronic equipment (WEEE as in directive 2012/19/EU) which should not be mixed with unsorted household waste. Instead, you should protect human health and the environment by handing over your waste equipment to a designated collection point for the recycling of waste electrical and electronic equipment, appointed by the government or local authorities. Correct disposal and recycling will help prevent potential negative consequences to the environment and human health. Please contact the installer or local authorities for more information about the location as well as terms and conditions of such collection points.

• FAQ

EN

⚠ Note: Before troubleshooting, disconnect the power supply and pull out the power plug.

Fault	Possible reason	Solution
The appliance does not work.	Low battery.	Charge the battery in time.
	High temperature due to prolonged use.	Leave the appliance to cool down, then turn on the power again.
	Power button is not pressed to turn on the appliance.	Short press the power button to start cleaning.
	Motor blockage protection.	Clear the blocked foreign matter in the air duct.
Weak suction power.	Damaged motor/battery.	Contact the after-sales service.
	The dust cup is full.	Clean the dust cup.
Excessive noise.	The brush head or extension rod's air duct is blocked by foreign objects.	Clean the brush head or extensive rod.
	The filter is clogged or not sufficiently dried after cleaning.	Clean the filter and dry it well.
Brush head does not rotate.	The dust cup is full.	Clean the dust cup.
	The air duct is blocked by foreign objects.	Clean the air ducts of foreign objects.
	Brush head blockage protection.	Clean the brush head or extensive rod.
The appliance cannot be charged.	The brush head or extension rod metal pin is dirty.	Clean the metal pins of the brush head or extension rod.
	The motor is not energized.	Contact the after-sales service.
	The connected power socket is not compliant or not plugged in securely.	Connect to a power outlet that meets the appliance's requirements and ensure secure contact.
Battery level indicator blinks continuously while charging.	The power adapter is not plugged in securely with the charging port.	Connect the power adapter to the charging port firmly.
	The power adapter is damaged.	Contact the after-sales service.
	The power adapter is not compatible with the appliance.	Use the power adapter supplied with the appliance for charging.

Caution:

- If the appliance malfunctions during use, please turn off the appliance before handling.
- If the problem is not solved, please contact the after-sales service.

• Product Specification

EN

Main unit

Product model: VCCD14A
Rated voltage: 25.2 V \pm 5%
Charging voltage: 30 V \pm 5%
Rated power: 450 W
Water tank capacity: 217 mL
Battery capacity: 2500 mAh

Soft roller brush head

Model: VCFB1B
Rated voltage: 12 V \pm 5%
Rated power: 15 W

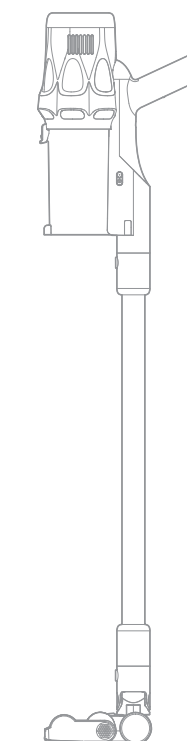
Electric mite removal brush

Model: VCM51A
Rated voltage: 12 V \pm 5%
Rated power: 15 W

Power adapter

Model: CZH015300060EUWP
Input: 100-240 V - 50/60 Hz 0.5 A
Output: 30 V \pm 5% 0.6 A

Model: GQ20-300060-AG
Input: 100-240 V - 50/60 Hz 0.8 A
Output: 30 V \pm 5% 0.6 A

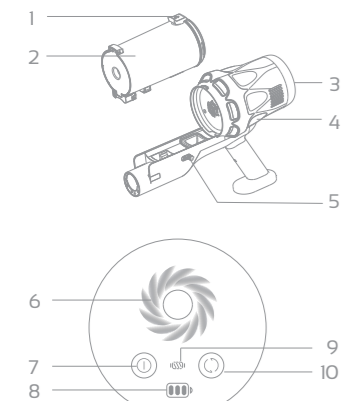


T30W XT

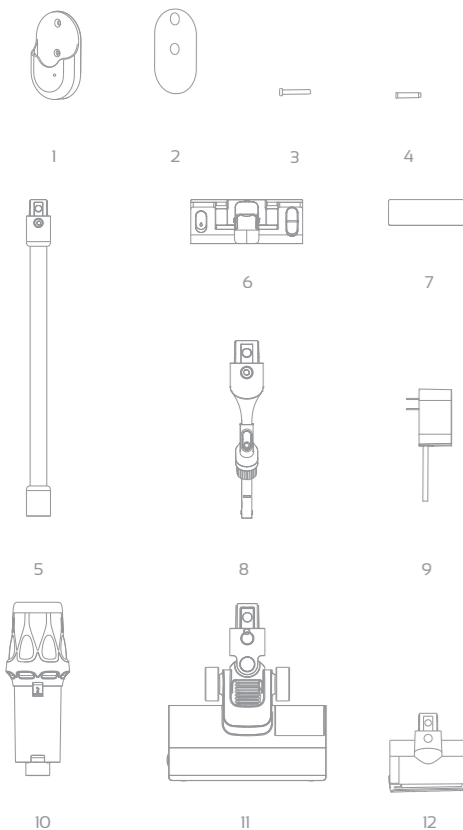
Deerma
Cordless Vacuum Cleaner

User Manual

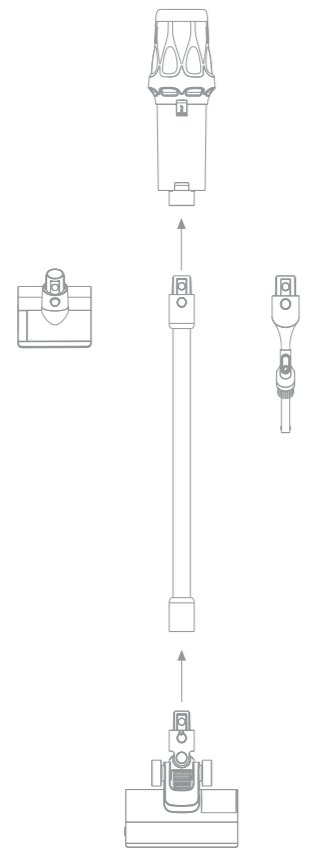
A



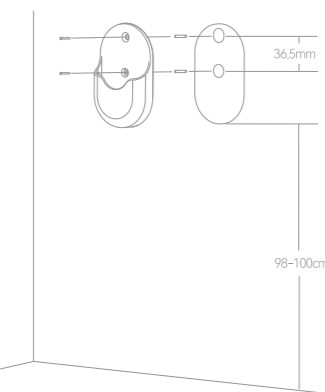
B



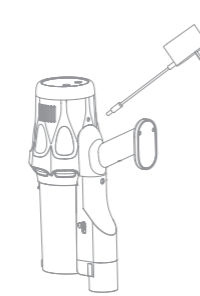
C-1



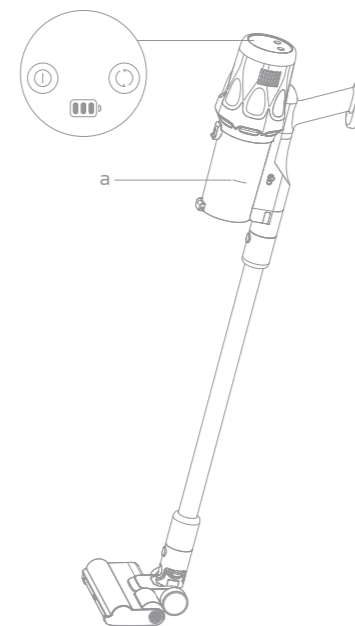
C-2



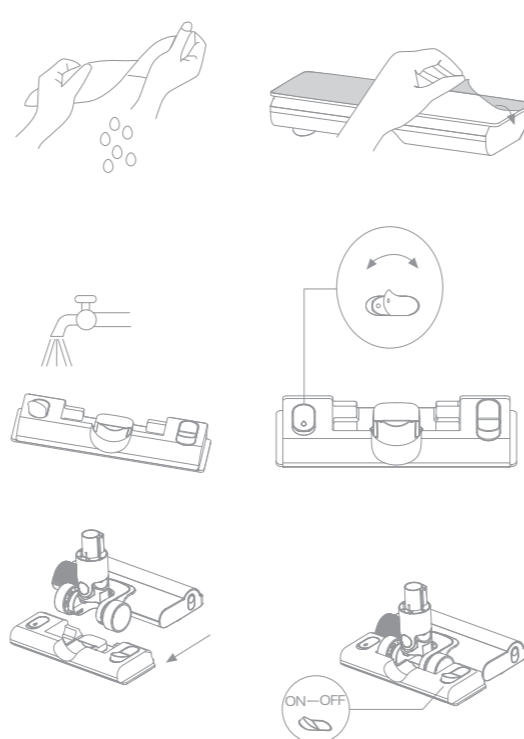
D-1



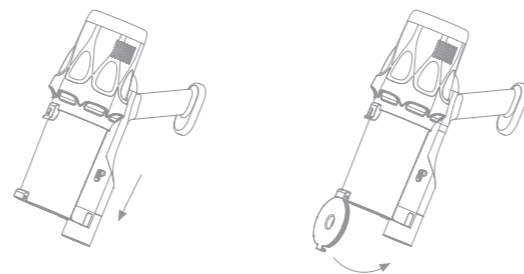
D-2



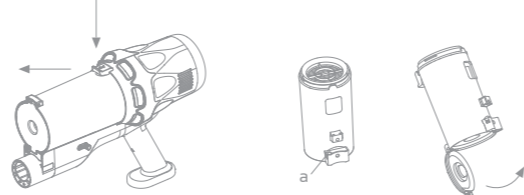
D-3



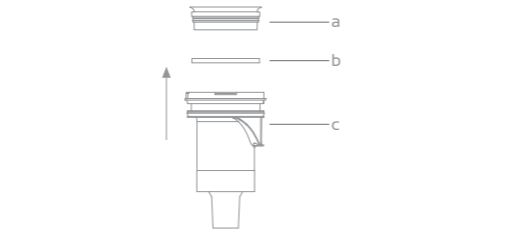
E-1



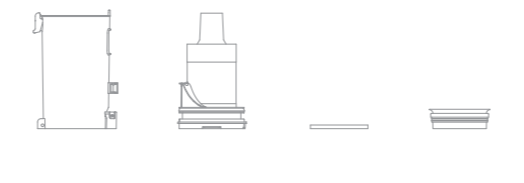
E-2



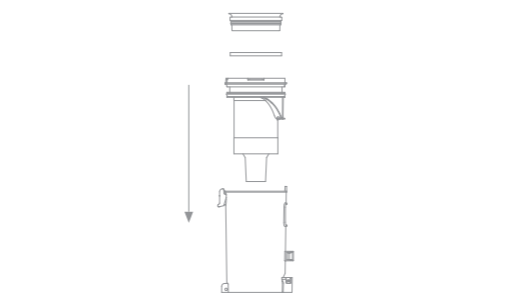
E-3



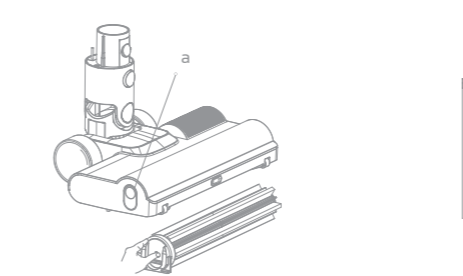
E-4



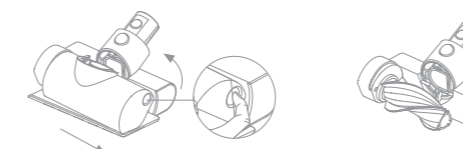
E-5



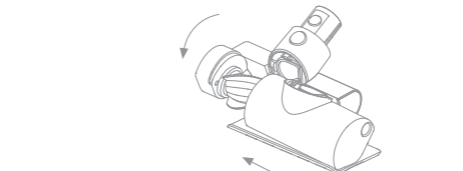
E-6



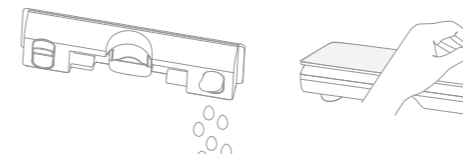
E-7



E-8



E-9



Safety Information

EN

Attention

Please read this instruction manual carefully before using the product and keep it properly.

1. Storage

- Be careful when handling the vacuum cleaner to prevent impacts.
- Do not place the vacuum cleaner close to fire sources or other high-temperature areas.
- Do not use or store the vacuum cleaner under extremely adverse conditions, such as extreme temperatures. It is recommended to use it in an indoor environment with a temperature between 5°C and 35°C.
- Store the appliance in a cool and dry place.
- If not in use for a long time, it is recommended to charge the appliance once every three months.

2. Before Use

- Please operate according to the instructions in the manual. Otherwise, it may cause damage to the product itself or personal injury.
- When using the vacuum cleaner for the first time or replacing a new filter, make sure that the filter is properly installed.
- Before charging, please first check whether the charging cable is in good condition.
- If the power adapter is damaged, you must purchase special components from the manufacturer or the maintenance department for replacement.
- If the supply cord is damaged, it must be replaced by the manufacturer, its service agent or similarly qualified persons in order to avoid a hazard.

3. During Use

- This product is only intended for use in indoor environments such as homes, hotels, and schools. Do not use it outdoors or in industrial environments.
- This appliance is not intended for use by persons (including children) with reduced physical, sensory or mental capabilities, or lack of experience and knowledge, unless they have been given supervision or instruction concerning use of the appliance by a person responsible for their safety.
- Children should be supervised to ensure that they do not play with the appliance.
- This appliance can be used by children aged from 8 years and above and persons with reduced physical, sensory or mental capabilities or lack of experience and knowledge if they have been given supervision or instruction concerning use of the appliance in a safe way and understand the hazards involved. Children shall not play with the appliance. Cleaning and user maintenance shall not be made by children without supervision.
- Do not touch the power cord plug or use the product with wet hands to prevent injuries.
- Do not use the vacuum cleaner in flammable and explosive gases.
- Do not use to pick up any liquids (such as water, flammable and explosive liquids like gasoline; or toxic solutions such as chlorine bleach, ammonia, and sewer cleaners).
- Do not use to pick up any burning or smoking objects (e.g. unextinguished cigarette butts, matches, etc.).
- Do not use to pick up hard or sharp objects (e.g. renovation waste, nails, etc.).

01

Safety Information

EN

- Do not use to pick up tiny particles like cement, gypsum powder, and wall powder; or large objects like toys, and paper balls. to avoid causing malfunction of the appliance.
- Do not allow limbs or other body parts of people or pets to get close to the rotating brush head to avoid injury.
- Do not operate the vacuum cleaner for a long time when the suction inlet or air blocked to avoid damaging the vacuum cleaner.
- Do not use the vacuum cleaner without installing the dust cup assembly.
- Do not place the vacuum cleaner on unstable surfaces such as chairs or dining tables to avoid damage or personal injury.
- If abnormal noises are found in the motor during use, please stop using it and perform troubleshooting. If the problem cannot be solved, please contact the after-sales service.
- Do not disassemble or assemble the machine privately.
- This appliance contains a lithium battery. Lithium batteries are hazardous goods. In case of failure, please contact the after-sales service. It is prohibited to disassemble and repair it privately.
- This appliance contains batteries that are only replaceable by skilled persons. Do not use any third-party batteries.
- WARNING: For the purposes of recharging the battery, only use the detachable supply unit provided with this appliance.

Product View

- | | |
|--|----------------------------|
| 1. Dust cup release button | 6. Mode status |
| 2. Dust cup | 7. Power button |
| 3. Screen display | 8. Battery level indicator |
| 4. Main unit | 9. Error indicator |
| 5. Dust cup bottom cover release trigger | 10. Mode switching button |

Fig.A

Note: The illustrations in this manual are for reference only. Please refer to the actual product.

Accessory list

- | | |
|------------------------|---------------------------------|
| 1. Storage holder | 7. Mop pad (Pre-installed) |
| 2. Positioning sticker | 8. 2-in-1 crevice nozzle |
| 3. Screw × 2 | 9. Power adapter |
| 4. Wall plug × 2 | 10. Main unit |
| 5. Extensive rod | 11. Soft roller brush head |
| 6. Water tank | 12. Electric mite removal brush |

Fig.B

02

Brand Vision
To be a leading product-centric, innovation led company,
preferred by ONE BILLION consumers GLOBALLY
Read Instruction manual carefully before use

Guangdong Deerma Health Technology Co., Ltd.

Add: No. 9 Chuangsheng Road, Xincun Village, Beijiao Town,
Shunde District, Foshan City, Guangdong Province, China

Made in China