

德尔玛说明书印刷要求

颜色规范:



黑色印刷
C0 M0 Y0 K100



专色印刷
PANTONE123 C
C0 M20 Y100 K0



内容印刷
C0 M0 Y0 K70



内容印刷
C0 M0 Y0 K50



内容印刷
C0 M0 Y0 K15

材质+工艺:

材质双胶纸80克, 风琴折
4色+1专

尺寸:

成品尺寸: 90×210mm,
展开尺寸: 630×210mm

技术要求:

- 1、色相正确、印迹牢固、套印准确、各色套印不露杂色, 套印误差 $\leq 0.1\text{mm}$, 横切定位 $\leq \pm 1\text{mm}$;
- 2、带*尺寸为重点检查尺寸。

产品主要参数				版本		册数	
基本尺寸	幅宽	长度	重量	产品名称	册数		
90*210	210	630	80g	产品型号	B1700 S		
120*210	210	630	80g	物料名称	说明书		
150*210	210	630	80g	型号	B1700-40179-00002		
180*210	210	630	80g	材质	双胶纸		
210*210	210	630	80g	规格	净重	比例	单位
240*210	210	630	80g	展开尺寸	32	/	3:1
270*210	210	630	80g	第 1 页 共 1 页			



Safety Instructions

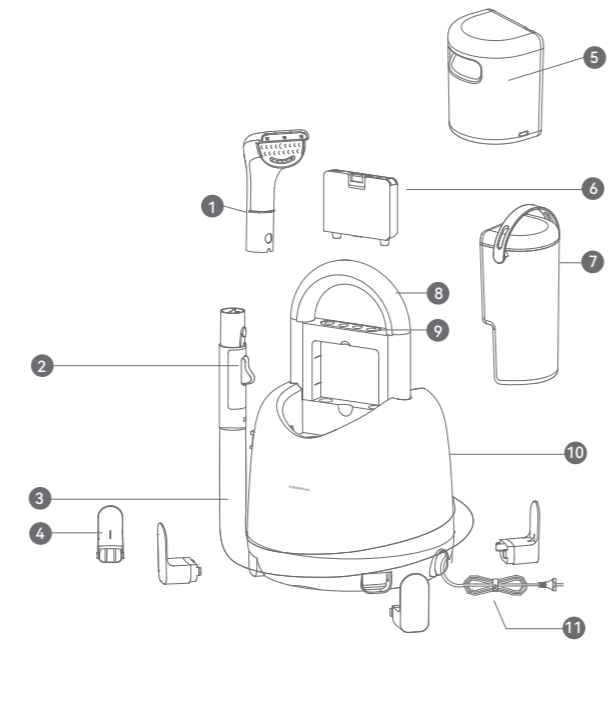
This product is classified as an electrical product. Before using this product, please carefully read the precautions in this manual and operate according to the requirements. Failure to follow this manual may result in device damage or personal injury. This product is designed for general household purpose (general household environment refers to temperature of 5-35 °C and humidity of 5-90%RH), rather than industrial or outdoor use. The precautions are described as follows:

1. This appliance is not intended for use by persons (including children) with reduced physical, sensory or mental capabilities, or lack of experience and knowledge, unless they have been given supervision or instruction concerning use of the appliance by a person responsible for their safety.
2. This appliance can be used by children aged from 8 years and above and persons with reduced physical, sensory or mental capabilities and knowledge if they have been given supervision or instruction concerning use of the appliance in a safe way and understand the hazards involved. Children shall not play with the appliance. Cleaning and user maintenance shall not be made by children without supervision.
3. Do not immerse the product in water or different liquids.
4. Wet finger and any part of the wet body is not allowed to touch the plug or any live insulation part on the product, as it may cause electric shock.
5. Do not use the plug or wire that is damaged to avoid danger, and contact our after-sales service center.
6. When using, the airflow channel and moving parts should be kept away from long hair, loose clothing, fingers, and other parts of the body.
7. Do not insert metal wires (such as pins, fine iron wires, copper wires, etc.) into the gaps of the product, as it may cause electric shock.
8. Only our professional technical personnel are allowed to repair or disassemble this product.
9. When it is not in use, the product should be unplugged to avoid electric leakage, short circuit, fire, and accidents.
10. The product that is involved in any abnormalities during the use must be immediately unplugged, and it is necessary to contact our after-sales service center for assistance.
11. After using the product, clean the sewage tank in a timely manner to make the air duct unobstructed and prevent blockage, as it may result in decreased suction, motor overheating, and reduced product life.
12. This product is only suitable for cleaning the indoor beds, sofas and blankets, which may not necessarily achieve the expected results on other items.
13. Please add the cleaning agent provided by our company according to the instructions to prevent excessive foam from penetrating the motor, which may damage the motor or reduce its performance.
14. Do not shake the product during the use, preventing sewage from entering the motor.
15. It is normal that there is a small amount of water inside the device due to product test.
16. Beware of steam/hot water burns during use.

Safety Instructions

17. High temperatures may occur when hot water grade and steam grade are in use. Be careful not to spray on persons and animals, as it may cause burns.
18. Hoses should be regularly inspected, and should not be used if damaged.
19. Liquids or vapors are not allowed to directly face the devices that contain electrical components, such as interior of oven.
20. After use and during maintenance, the power plug should be unplugged.
21. To reduce the impact of scale on heating efficiency, it is recommended to use purified water in the clean water tank.
22. When collecting the power cord, be sure to shut down the device first, then unplug it, and then carefully collect the cord.
23. After each use, remove the clean water tank and turn on the room-temperature water grade in a state of power-on. Press the water outlet button to drain the remaining water in the pipeline, as it may cause odor.
24. To avoid danger, the power cord that is damaged must be replaced by professionals from the manufacturer, its maintenance department or similar departments.

Product Introduction



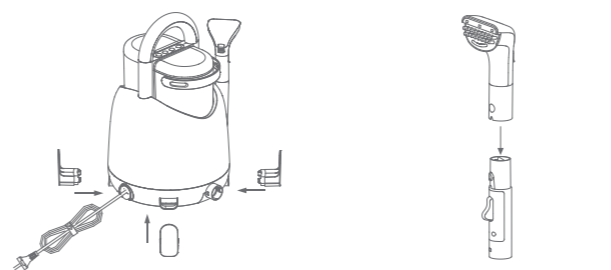
- | | | | |
|------------------------|--------------------------|--------------------|---------------|
| 1 Steam Standard Brush | 2 Water Spray Button | 3 Hose | 4 Hose Holder |
| 5 Clean Water Tank | 6 Cleaning Solution Tank | 7 Dirty Water Tank | 8 Handle |
| 9 Button Panel | 10 Main Unit | 11 Power Plug | |

Packing List

Parts Name			
Main Unit	1	Wide Fan Brush (Including the brush assembly)	1
Steam Standard Brush	1	Glass Brush	1
Hose Holder	4	High-Pressure Nozzle	1
User Manual	1	Kitchen Cleaning Nozzle	1
Steam Handle	1		

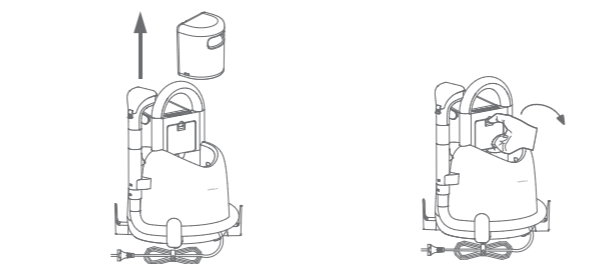


Installation

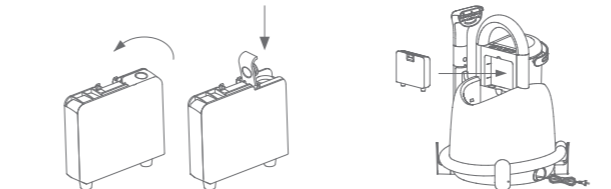


- Assembling the main unit before use:
1. Open the packaging, take out the main unit, and insert the four hose holders into their corresponding positions on the main unit.
 2. Insert the steam standard brush into the hose handle, ensuring it cannot be pulled out in reverse.

Installation



3. Take out the clean water tank, then press the latch to remove the cleaning solution tank as shown in the diagram.

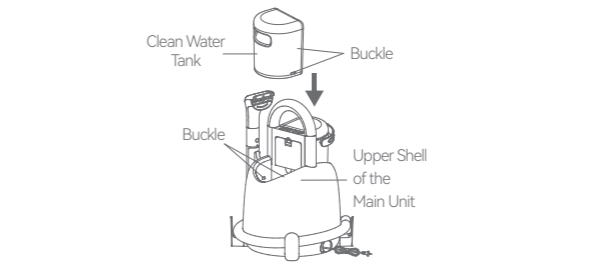


4. Open the cleaning solution tank lid, pour in an appropriate amount of cleaning solution (Do not use non-specified cleaning solutions), then securely fasten the lid.
5. Install the cleaning solution tank into the corresponding position on the main unit.

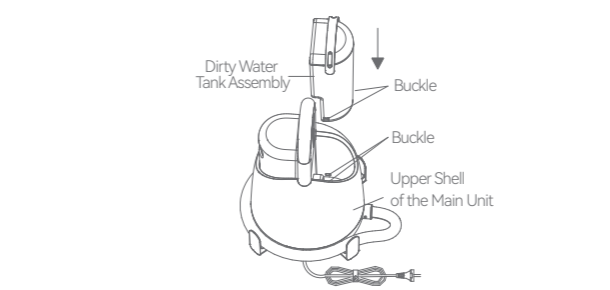


6. Unscrew the clean water tank cap as shown in the diagram.
7. Fill the clean water tank with clean water (Do not exceed the indicated water level line), then tighten the cap. Note: To reduce scaling, it is recommended to use purified water.

Installation

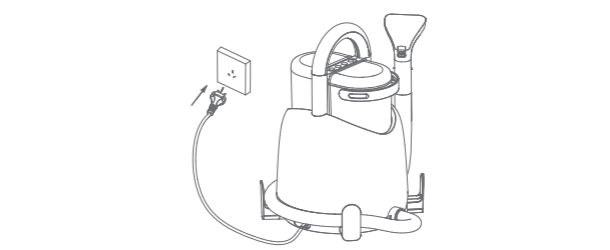


8. Place the clean water tank into the main unit as illustrated, aligning the two buckles on the main unit's upper shell with the two buckles on the clean water tank.



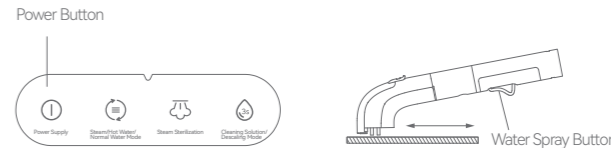
9. Place the dirty water tank into the main unit as illustrated, aligning the two buckles on the main unit's upper shell with the two buckles on the dirty water tank.

Operation

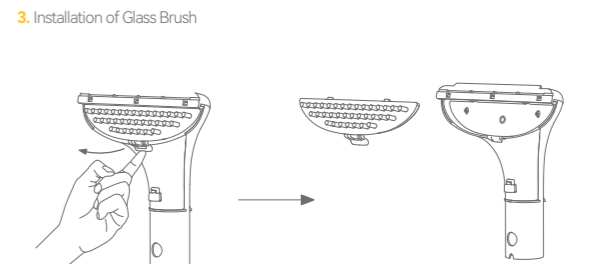


1. Power On
Please confirm that the cleaning solution tank, clean water tank, and dirty water tank are properly installed, the cleaning solution tank contains cleaning solution, the clean water tank is filled with water, and the hose and brush head are correctly attached. Pull out the power cord and plug it into a household power outlet, the machine will enter standby mode.

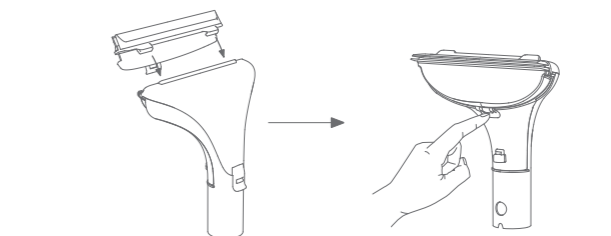
Operation



2. Operation
1) Press the power button lightly, the power button indicator will light up white.
2) Hold down the water spray button while moving the brush head back and forth for cleaning. Release the water spray button when cleaning is complete. Do not use the brush head to directly suck up large amounts of water.



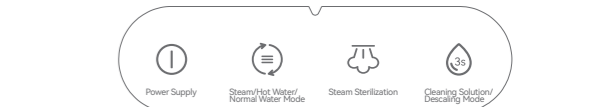
3. Installation of Glass Brush
1) Remove the brush assembly from the wide fan brush.



- 2) Attach one end to the viewing window, then rotate to install the glass brush until a "click" sound indicates secure installation.

Warning: Do not use the wide fan brush in steam mode.

Operation



4. Choose operating mode
Choose the corresponding cleaning mode based on the material and degree of dirt that needs to be cleaned.
You can scan the QR code in the Quick Start Guide to watch the operation video.
Note: Only the Steam Standard Brush is permitted for use in steam mode. Only the Steam Handle and its matching brush attachments may be used in sterilization mode.

5. Steam/Hot Water/Normal Water Mode
1) When steam cleaning is required, press the "Steam/Hot Water/Normal Water Mode" button. During the steam preparation, the indicator is flashing in red. After the steam preparation is completed, the indicator remains in red.
2) When hot water is needed for cleaning, press the "Steam/Hot Water/Normal Water Mode" button again. During the hot water preparation, the indicator is flashing in yellow. After the hot water preparation is completed, the indicator remains in yellow.
3) When using normal water for cleaning, press the "Steam/Hot Water/Normal Water Mode" button again, and the indicator remains in white.
4) When steam, hot water or normal water is needed for cleaning, the water absorption function on the device is turned on by default, and then works with the matching brush head to clean and absorb excess water.
Note: The preparation is not required when it changes from steam to hot water.

Warning:
· A risk of burns may occur in steam/hot water mode. Please ensure that the brush head is facing downwards before use, and do not spray towards persons or animals.
· Liquids or vapors are not allowed to directly face the device that contains electrical components.

6. Steam Sterilization
When steam sterilization is needed, press the "Steam Sterilization" button. During the steam preparation, the indicator is flashing in red. After the steam preparation is completed, the indicator remains in red. At this time, you can use the device.
Warning: There is a risk of burns in steam sterilization mode.

7. Cleaning solution
When using cleaning solution for cleaning, press the "Cleaning Solution/Descaling" button, and the indicator light will stay steadily white.
Press the "Cleaning Solution/Descaling" button again to turn off the indicator light and stop the cleaning solution pump. In either hot water cleaning mode or normal-temperature water cleaning mode: Press the cleaning solution button to activate automatic cleaning solution dispensing and press the button again to turn it off.
Note: Only use Deerma antibacterial cleaning solution. Other cleaning solutions may affect cleaning performance and cause equipment malfunction.

Operation

8. Descaling Mode

When the heater operates for 300 minutes, the machine will prompt with a voice to activate the descaling mode. To turn it on, press and hold the descaling mode button for 3 seconds. When you hear the voice 【Turning on the descaling mode, Limescale dissolving in progress, Please Wait】, follow the voice prompts to complete the descaling process.

Once the machine detects that the descaling process has been completed, the reminder will stop. Otherwise, a voice prompt will remind you to enter the descaling mode each time the machine is turned on.

Warning: Due to variations in water quality across regions, if limescale is not fully removed during use, you can repeat the above steps for additional cleaning.

9. Shutdown

After cleaning is completed, press the "Power Supply" button. After 3 seconds, the indicator turns off, and the device shuts down.

10. When switching between steam/hot water/normal-temperature water grades during operation:

- Please be patient because switching between grades needs to take several tens of seconds to prepare or cool down.

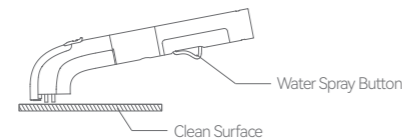
- Caution: The water or steam initially discharged from the brush head may be at high temperature - take precautions against scalding.

After the work is finished, tap the power button to make the machine enter the standby state. If you do not continue to use, please unplug the power cable.

Cleaning & Maintenance

Pipeline Self-cleaning Mode

Standard Self-Cleaning



1. Confirm that the clean water tank contains fresh water and the machine is in the power on state. Hold the steam standard brush with its bristles horizontally against a clean floor or countertop. Press and hold the water discharge button with your finger to clean the machine's internal piping system. During cleaning, you may switch between hot and cold water modes as during normal operation to achieve optimal cleaning results.



2. Unplug the machine before servicing. Slide off the transparent cover (follow arrow direction). Wash the cover separately.

3. Dry the transparent cover completely before reattaching.

Cleaning & Maintenance

Deep Self-Cleaning



1. Remove the brush head.

2. Turn on the appliance and press the "Normal Water Mode" button.

3. Place the hose in the sink to suck water for self-cleaning.

Dirty Water Tank Cleaning



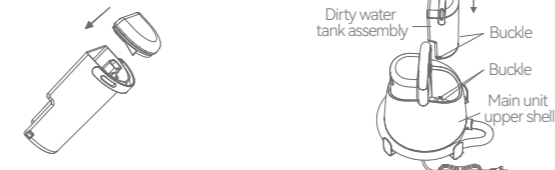
1. Flip the handle and lift the dirty water tank vertically from the main unit.

2. Remove the dirty water tank cover.



3. Pour out the dirty water in the direction shown, then rinse the tank with clean water and air-dry.

4. Remove the sponge from the tank cover as illustrated, rinse the cover with clean water, then air-dry both the sponge and cover.



5. After drying the tank (air-dry or blow-dry), reattach the cover.

6. Reinstall the dirty water tank assembly by aligning the two buckles on the main unit's upper shell with the tank's buckles (as shown in the diagram).

Note: The unit's exterior can be wiped with a dry or slightly damp cloth and always unplug the device before cleaning.

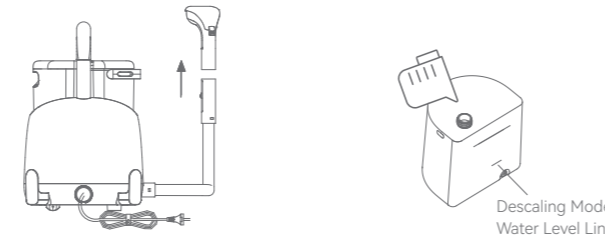
Cleaning & Maintenance

Descaling Mode

1. When the water output of the brush head decreases after long-term use of the product, or when there is a prompt of descaling mode on the product, choose the descaling mode to clean the scale inside the heating unit.

2. When the heater operating time reaches 300 minutes, the machine will provide a voice prompt to activate the descaling mode. Once the machine detects that the descaling process has been completed, the reminder will stop. Otherwise, a voice prompt will remind you to enter the descaling mode each time the machine is turned on.

3. Descaling Procedure:



a. Remove the brush head.

b. Mix citric acid disinfectant with water in a ratio of 1:20, fully dissolve it, and pour the mixed solution into the clean water tank to the descaling mode water level line, and then install the clean water tank.



c. Put the brush head into the sink.

d. Press and hold the "Cleaning solution /Descaling mode" button for 3 seconds. The power indicator remains in white, the water temperature switch remains in yellow. At this time, the descaling mode is activated.

e. After the descaling mode is completed, please clean the clean water tank. Once the handle and brush head are properly installed, the appliance can be used as normal.

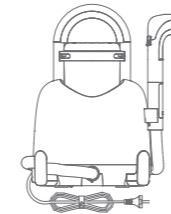
Note:

1) Due to variations in water quality across regions, if limescale is not fully removed during use, you can repeat the above steps for additional cleaning.

2) Customers need to purchase citric acid on their own.

Troubleshooting

Storage



Place the hose and brush head as shown in the figure, and store them in a well-ventilated and dry place.

Note:

1) If the device is not used for a long time, empty the clean water tank, dirty water tank and internal pipelines during storage, and clean them thoroughly to avoid the odor in pipelines. The cleaning solution in the cleaning solution tank should also be poured out to prevent air drying from affecting the fluidity of the liquid.

2) Drainage of internal pipelines: Remove the clean water tank, start the room-temperature water grade in the startup state, and press the "Water Outlet" button to drain the water from the pipeline.

⚠ Note: Before troubleshooting, cut off the power supply and remove the power plug.

Fault	Analysis	Solution
Weaker suction of the brush head	The dirty water tank is full of water	Pour out the dirty water in the dirty water tank
	The pipe opening is blocked	Check that the nozzle is not clogged and clean if necessary
	The device is used too long	Power off and cool down for more than ten minutes before use
No water or steam from the spray nozzle	Clean water tank is short of water	Add water to the clean water tank
	It is blocked with scale	Activate the descaling mode to remove scale
Device failure to work by pressing button	The power plug is not connected	Connect the power plug

If the fault still exists, please contact a franchised maintenance department of the Company for solution.

Technical Parameter

Product Name: Water-absorbing Vacuum Cleaner (Fabric & Upholstery Cleaner)

Product Model: BYAD17A

Rated Voltage/Frequency: 220-240V~ /50-60 Hz

Rated Power: 1700 W

Steam Power: 1500 W

Suction Power: 400 W

Capacity of Clean Water Tank: 1.7 L

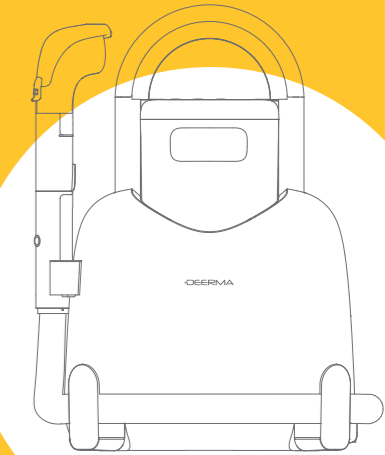
Capacity of Dirty Water Tank: 1.4 L

Environment Protection



All products bearing this symbol are waste electrical and electronic equipment (WEEE as in directive 2012/19/EU) which should not be mixed with unsorted household waste. Instead, you should protect human health and the environment by handing over your waste equipment to a designated collection point for the recycling of waste electrical and electronic equipment, appointed by the government or local authorities. Correct disposal and recycling will help prevent potential negative consequences to the environment and human health. Please contact the installer or local authorities for more information about the location as well as terms and conditions of such collection points.

User Manual



BY700 S

Deerma Fabric & Upholstery Cleaner

5 Multifunctional Brush Assemblies
Steam Standard Brush/Wide Fan Brush/Glass Brush/
High-Pressure Nozzle/Kitchen Cleaning Nozzle

Read user manual carefully before use